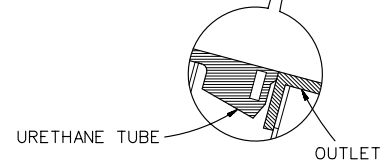
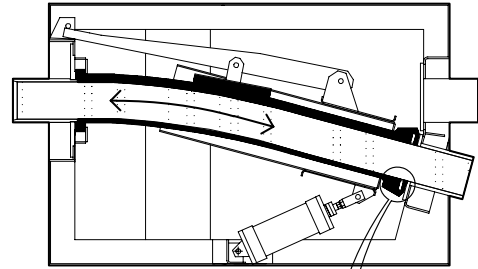
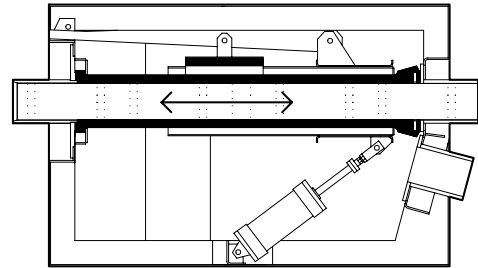
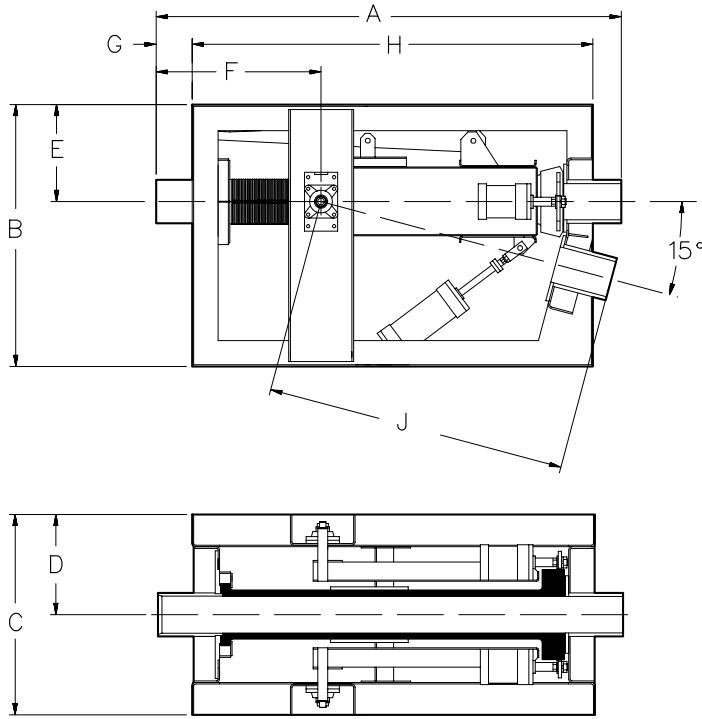


# TWO-WAY LINE SWITCH HEAVY DUTY 15°

MODEL 299 & 309



THE **NOL-TEC** TWO-WAY SWITCH IS DESIGNED FOR TROUBLE-FREE CONVEYING OF DRY MATERIALS IN PNEUMATIC CONVEYING SYSTEMS.

Model	Size	A	B	C	D	E	F	G	H	J	Ship Wt. (lbs)
299	4" & 5"	48"	27"	22"	11"	10"	17"	3.50"	41.50"	31"	450
309	6"	72"	40.50"	31"	15.50"	15"	25.50"	5.50"	61.94"	46.50"	900

## STANDARD FEATURES:

- One-piece abrasion resistant urethane tube with integral seal
- Uniform and smooth internal bore minimizes cross contamination
- One positioning air cylinder that selects direction of flow.
- Dual sealing air cylinders provide positive dust-tight operation
- Conveying pressure up to 90 PSIG
- Heavy-duty steel construction
- Suitable for either diverging or converging applications
- Electrical components suitable for outdoor service
- Limit switches used to indicate position and sealing functions

## OPTIONAL FEATURES:

- Seal closes off unused conveying line
- Flanged or grooved conveying line connections
- Stainless product contact
- Stainless construction
- Weather protection covers
- FDA tube
- Contact Nol-Tec with your special requirements.

## SPECIFICATIONS:

- Maximum temperature: 200° F
- Air:
  - Clean and dry at correct pressure dew point
  - 80 PSIG minimum
- Electrical:
  - Solenoid valve - 110-120V, 50/60HZ
  - Limit switch - DPDT, 10 AMP