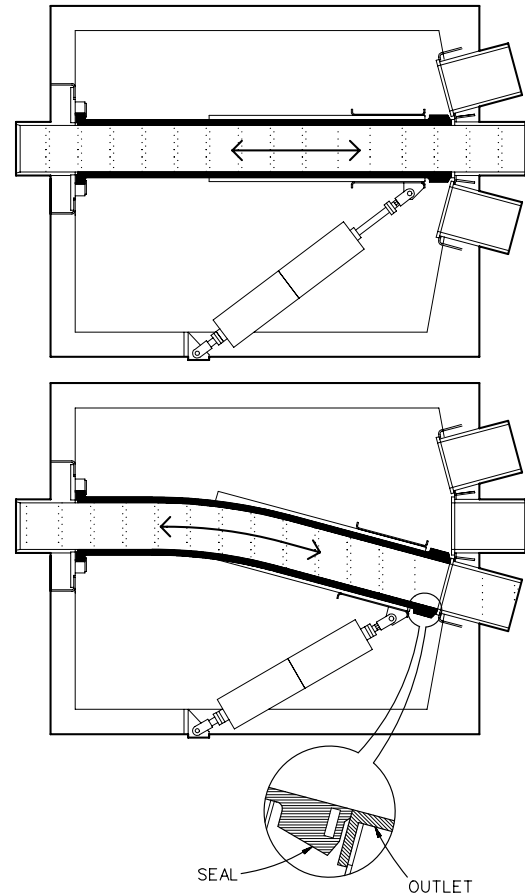
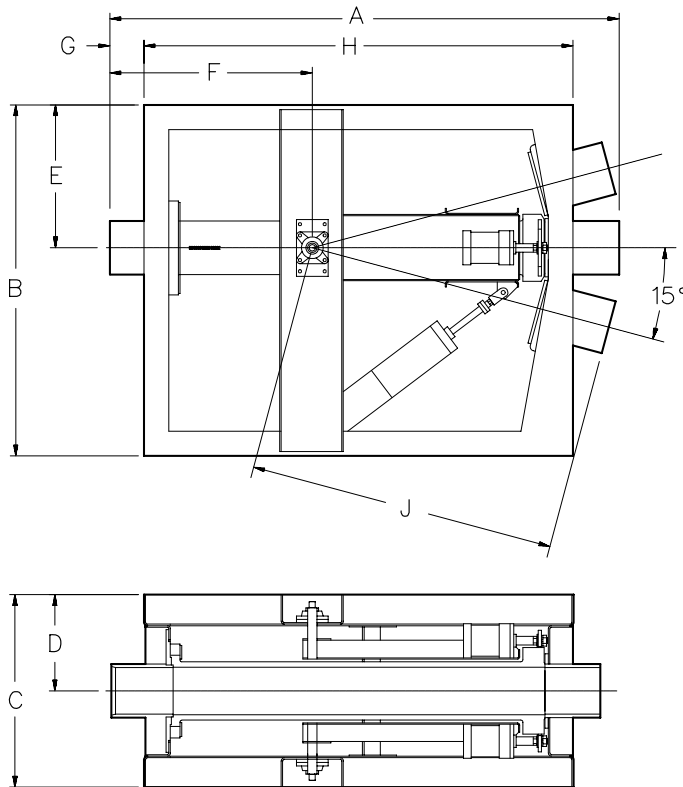


THREE-WAY LINE SWITCH HEAVY DUTY 15°

MODEL 320, 330 & 341



THE **NOL-TEC** THREE-WAY SWITCH IS DESIGNED FOR TROUBLE-FREE CONVEYING OF DRY MATERIALS IN PNEUMATIC CONVEYING SYSTEMS.

Model	Size	A	B	C	D	E	F	G	H	J	Ship Wt. (lbs)
320	6" & 8"	83"	64"	35"	17.50"	24"	31.50"	5"	73"	51.50"	1100
330	4" & 5"	43"	42"	18"	9"	14.81"	8.75"	4"	32.91"	34.25"	850
341	2" & 3"	34"	32"	15"	7.50"	12"	8"	3.25"	26.25"	26"	700

STANDARD FEATURES:

- One-piece abrasion resistant urethane tube with integral seal
- Uniform and smooth internal bore minimizes cross contamination
- Positioning air cylinders that select direction of flow.
- Dual sealing air cylinders provide positive dust-tight operation
- Conveying pressure up to 90 PSIG
- Heavy-duty steel construction
- Suitable for either diverging or converging applications
- Electrical components suitable for outdoor service
- Limit switches used to indicate position and sealing functions

OPTIONAL FEATURES:

- Flanged or grooved conveying line connections
- Stainless product contact
- Stainless construction
- Weather protection covers
- FDA tube
- Contact Nol-Tec with your special requirements

SPECIFICATIONS:

- Maximum temperature 180° F
- Air:
 - Clean and dry at correct pressure dew point
 - 80 PSIG minimum
- Electrical:
 - Solenoid valve - 110-120V, 50/60HZ
 - Limit switch - DPDT, 10 AMP